

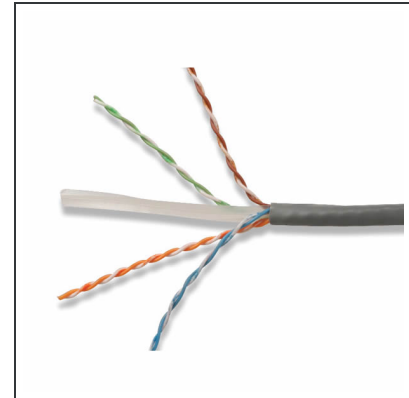
Product Spec Sheet



Part Number: 9C6L4-E2-RXA

Description: Cable, Copper, Category 6, E2, 4 Pair, Solid, UTP, LSOH-1/3-22, Violet, Reelex, 305 Meter, 24 AWG, Class Eca

System 6 cable provides significant headroom above all ISO/IEC and ANSI/TIA Category 6 / Class E transmission performance specifications. Combine our high performance category 6 connectivity with System 6 cable and the result is a system with superior electrical performance for optimum applications support.



Disclaimer: The product images shown are for illustration purposes only and may not be an exact representation of the product

General:

Product Family	Cable - UTP Cat 6
----------------	-------------------

Ordering & Logistics:

Regional Availability	International
-----------------------	---------------

Weights & Dimensions:

Product Weight (kg)	10.7
Product Weight (lbs)	23.59

Physical Specifications:

Conductor Type	Solid
----------------	-------

Product Spec Sheet



Cable Length	305 Meter
Cable Construction	UTP
# of Pairs	4 Pair
Jacket Color	Violet
Jacket Type	LSOH-1/3-22
Double Jacket	No
Cable OD (mm) (nominal)	5.8
Cable OD (in) (nominal)	0.23
Conductor Insulation OD (mm) (nominal)	0.6
Conductor Insulation OD (in) (nominal)	0.04
Conductor AWG (Nominal)	24 AWG
Conductor OD (mm) (nominal)	0.6
Conductor OD (in) (nominal)	0.02
Rip Cord	No
Isolation Member	Yes
Mylar Tape	No
Gel Filled	No
Application Environment	Indoor
Overall Shield	No
Packaging	Reelex

Mechanical Specifications:

Operating Temperature (°C)	-20 to 70
Operating Temperature (°F)	-4 to 158
Installation Temperature (°C)	0 to 50

Product Spec Sheet



Installation Temperature (°F)	32 to 122
Storage Temperature (°C)	-20 to 60
Storage Temperature (°F)	-4 to 140
Bend Radius (mm) (min)	25
Bend Radius (in) (min)	1
Pulling Tension (N) (max)	110
Pulling Tension (lbf) (max)	25

Electrical Specifications:

Category	Category 6
Performance Level	E2
MHz	250 MHz
DC Resistance @ 20°C (68°F)	<7.32Ω/100m
DC Resistance Unbalance Within Pairs	≤2%
DC Resistance Unbalance Between Pairs	≤5%
Mutual Capacitance	≤5.6 nF/100m
Capacitance Unbalanced	≤160 pF/100m
NVP	68.00%
TCL	≥30-10*log(f/100) dB
Delay Skew	≤35 ns/100m
Voltage Rating	300V
Max Operating Voltage	80V

Compliance:

Product Spec Sheet



Industry Standards	ANSI/TIA-568.2-D (Category 6), IEC 61156-5 (Category 6), ISO/IEC 11801-1 (Class E), IEC 60332-1 , IEC 60332-3-22, IEC 60754-2, IEC 61034-2, EN 50575
Applications Support	10/100/1000BASE-T, PoE (Type 1,2,3,4) and PoH
Safety & Certifications	Euroclass CPR Eca
Sustainability	RoHS, REACH, Lead-free, Halogen-free, PVC-free

Transmission Performance:

Transmission Performance



Guaranteed Worst Case



Siemon Typical

Frequency (MHz)	Insertion Loss (dB)		NEXT (dB)		PS NEXT (dB)		ACR-F (dB)		PS ACR-F (dB)		Return Loss (dB)		ACR-N (dB)		PS ACR-N (dB)		Propagation Delay (ns)	
1.0	2.0	1.9	77.3	100.7	75.3	99.6	70.8	92.4	68.8	90.1	21.0	25.8	75.3	98.9	73.3	97.7	550	545
4.0	3.7	3.7	68.3	88.2	66.3	88.0	58.8	79.3	56.8	78.3	24.0	32.0	64.5	84.5	62.5	84.3	532	527
10.0	5.9	5.8	62.3	85.3	60.3	83.7	50.8	71.2	48.8	69.8	26.0	37.9	56.4	79.5	54.4	77.8	525	520
16.0	7.5	7.4	59.2	76.8	57.2	75.8	46.7	69.4	44.7	66.3	26.0	37.1	51.8	69.5	49.8	68.4	523	518
20.0	8.4	8.3	57.8	75.4	55.8	74.7	44.8	66.9	42.8	64.7	26.0	35.5	49.4	67.1	47.4	66.4	522	517
31.25	10.6	10.4	54.9	76.6	52.9	73.4	40.9	62.3	38.9	60.6	24.7	43.4	44.4	66.4	42.4	63.0	520	515
62.5	15.2	15.0	50.4	67.1	48.4	66.4	34.9	50.3	32.9	49.5	22.5	36.3	35.1	52.4	33.1	51.4	519	514
100.0	19.6	19.1	47.3	66.4	45.3	65.5	30.8	48.4	28.8	47.6	21.1	33.1	27.7	47.7	25.7	46.5	518	513
160.0	25.4	24.4	44.2	61.9	42.2	60.1	26.7	43.8	24.7	42.8	19.7	31.4	18.9	38.0	16.9	36.1	517	512
200.0	28.7	27.4	42.8	61.6	40.8	58.7	24.8	47.6	22.8	45.4	19.0	27.9	14.1	34.7	12.1	31.8	517	512
250.0	32.6	30.9	41.3	58.3	39.3	56.1	22.8	46.5	20.8	42.6	18.3	25.6	8.8	27.9	6.8	25.8	516	511
300.0*	-	34.1	-	60.0	-	58.1	-	40.0	-	38.2	-	25.6	-	26.2	-	24.2	-	511
400.0*	-	39.9	-	49.3	-	49.1	-	40.0	-	37.8	-	22.9	-	9.6	-	9.3	-	511
500.0*	-	45.0	-	50.6	-	48.7	-	35.9	-	34.7	-	22.6	-	6.5	-	4.5	-	511
550.0*	-	47.7	-	53.4	-	50.9	-	31.8	-	31.1	-	22.4	-	6.6	-	3.3	-	510
600.0*	-	49.5	-	48.8	-	48.1	-	33.8	-	31.8	-	20.9	-	0.2	-	-0.5	-	510

All performance based on 100 meters (328 ft.).

* Values above 250 MHz are informational only.

For more details about the product, please [Click Here](#)



Because we continuously improve our products, Siemon reserves the right to change specifications and availability without prior notice.

North America P: (1) 860 945 4200	Mexico P: (521) 556 387 7708/09/10	Latin America P: (571) 657 1950/51/52	Europe P: (44) 0 1932 571771	China P: (86) 215385 0303	India, Middle East & Africa P: (971) 4 3689743
Asia Pacific P: (61) 2 8977 7500	Siemon Interconnect Solutions P: (1) 860 945 4213 www.siemon.com/SIS				

